

# Cover

design by Patricia Urquiola

colours

sizes

technical features

packing

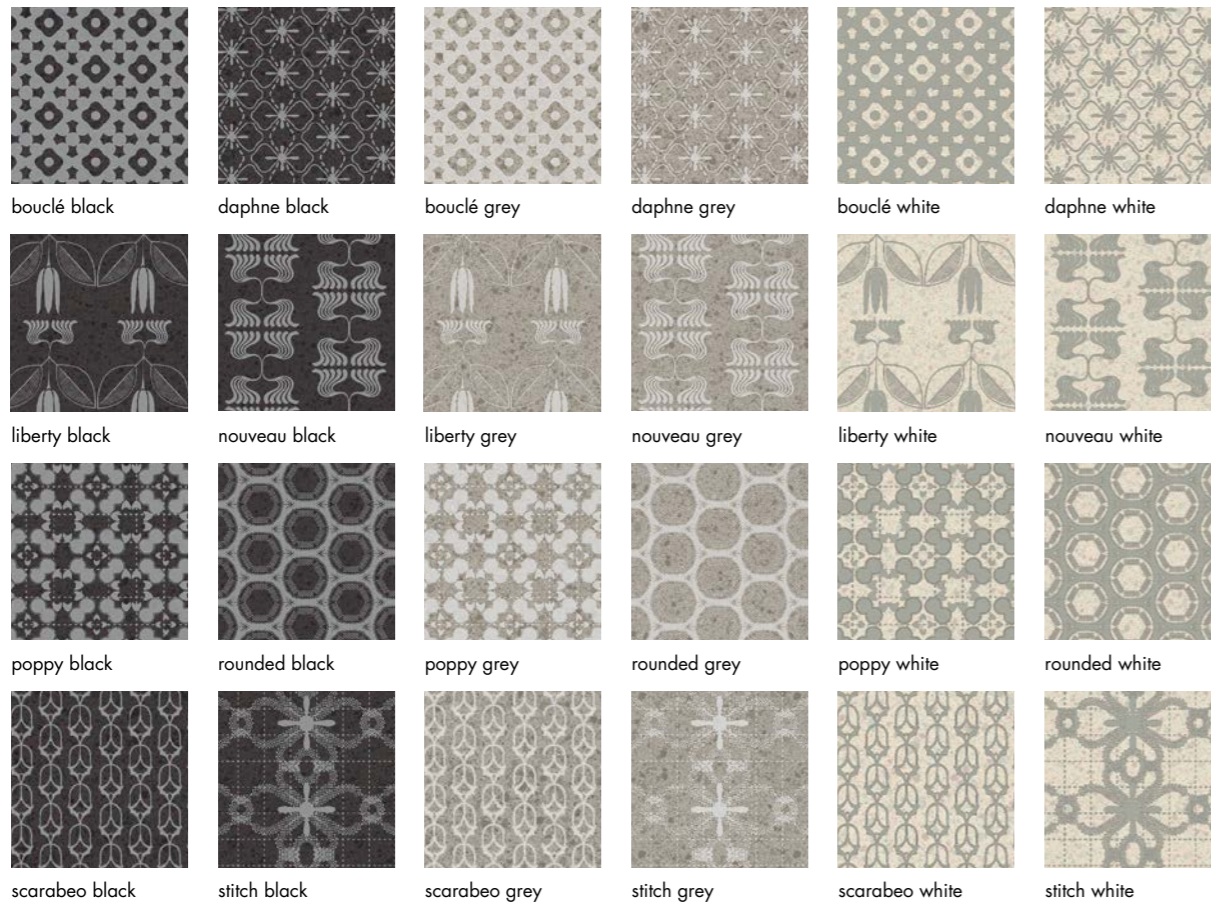
MU  
TIN  
A

## Sizes & Colors

design	Patricia Urquiola	2017
production	industrial	
material	gres porcellanato non smaltato ad impasto omogeneo unglazed homogeneous porcelain stoneware	
thickness	6 mm	
*	misure nominali/nominal sizes	

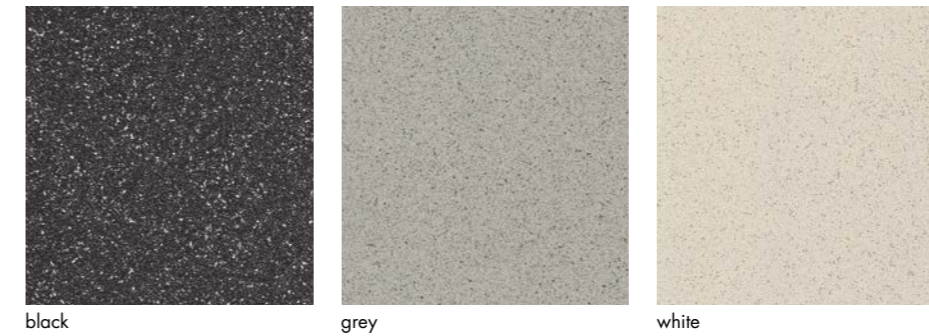
Modello depositato piastrelle n° 004427748-0001/0027 – data di deposito: 31/10/2017  
Registered design (tiles) n° 004427748-0001/0027 – date of registration: 31/10/2017  
Modello depositato grafiche n° 004426930-0001/0010 – data di deposito: 31/10/2017  
Registered design n° 004426930-0001/0010 – date of registration: 31/10/2017

### Pattern 30·120 cm / \*12"·47"

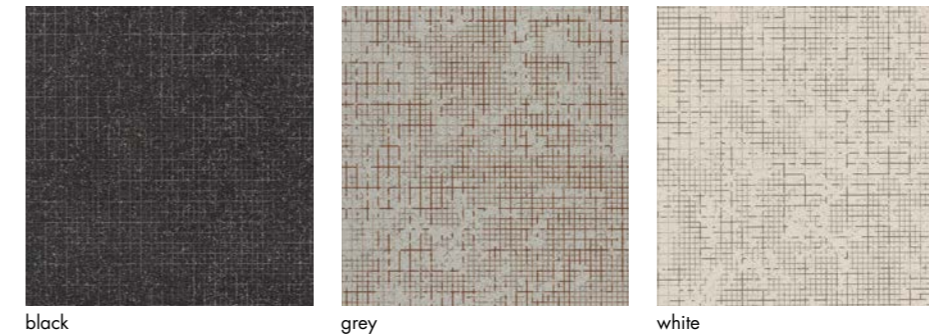


## Sizes & Colors

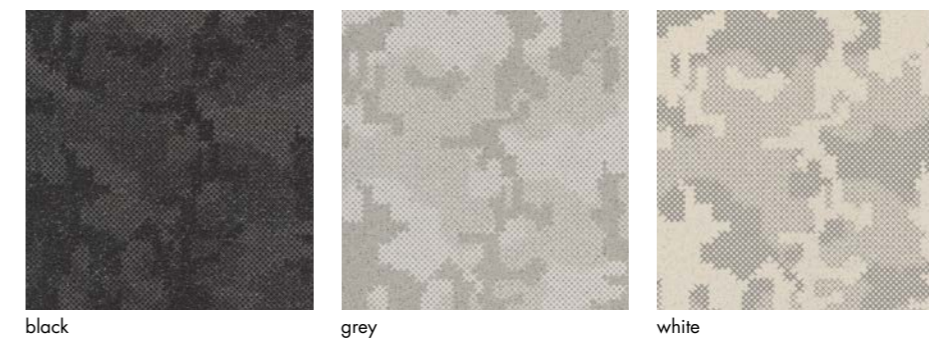
Base 120·120 cm / \*47"·47" | 30·120 cm / \*12"·47"



Grid 120·240 cm / \*47"·94" | 120·120 cm / \*47"·47"



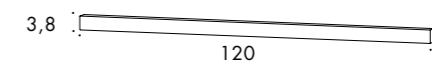
Nube 120·240 cm / \*47"·94" | 120·120 cm / \*47"·47"



Stucchi/Grouts Bianco 50 (Cover White)    Grey 76 (Cover Grey)    Nero 06 (Cover Black)



Battiscopa/Skirting 3,8·120 cm / \*2"·47"

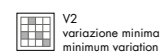


## Technical Features

UNI EN14411:2012 App. GL. (Bla Group)

NORMA STANDARD	CARATTERISTICHE FEATURES	VALORE PRESCRITTO VALUE REQUIRED	COVER	
ISO 10545/2	DIMENSIONI/SIZES			
	lunghezza e larghezza/ length and width	± 0,6%	conforme in conformity with standard	
	spessore/thickness	± 5%		
	rettilinearità degli spigoli/ straightness of edges	± 0,5%		
	ortogonalità/wedging	± 0,5%		
	planarità/flatness	± 0,5%		
ISO 10545/3	assorbimento d'acqua/ water absorption	< 0,5%	conforme in conformity with standard	
ISO 10545/6	resistenza all'abrasione profonda resistance to deep abrasion	≤ 175mm <sup>3</sup>	conforme in conformity with standard	
ISO 10545/9	resistenza agli sbalzi termici resistance to thermal shock	nessuna alterazione visibile no visible alteration	resiste resistant	
ASTM C484		no samples must show visible defects	unaffected	
ISO 10545/12	resistenza al gelo frost resistance	nessuna alterazione visibile no visible alteration	resiste resistant	
ISO 10545/13	resistenza agli attacchi chimici resistance to chemical attacks	nessuna alterazione visibile no visible alteration	resiste resistant	
DIN 51130-04		valori medi		
		6÷10°	R9	R9 Nube
		10÷19°	R10	R10 Grid
		19÷27°	R11	
		27÷35°	R12	
	> 35°	R13		
DCOF		> 0,42	0,70	

Sistema produttivo con certificazione ambientale ISO 14000 e ISO 9001  
Environmental management system ISO 14000 and ISO 9001



## Packing

FORMATO SIZE	PZ-MQ PCS-SQM	PZ-SCAT. PCS-BOX	MQ-SCAT. SQM-BOX	SCAT.-PAL. BOX-PAL.	KG-SCAT. KG-BOX	KG-PAL. KG-PAL.	MQ-PAL. SQMS-PAL.
120-240 cm	0,35	1	2,88	22	39	858	63,36
120-120 cm	0,69	2	2,88	20	39,50	790	57,60
30-120 cm	2,78	4	1,44	44	19,80	871,20	63,36
battiscopa/skirting 3,8-120 cm	-	5	6	-	3	-	-

## Patricia Urquiola



Architetto e designer spagnola, ma italiana di adozione, fa parte del team Mutina dal 2008. Ha disegnato numerose collezioni, tra cui: la serie Déchirer, Bas-Relief, Azulej e Tierras.

Patricia Urquiola è nata a Oviedo, in Spagna, ma vive e lavora a Milano da più di vent'anni. Dopo essersi laureata nel 1989, ha lavorato per Achille Castiglioni, collaborato con Vico Magistretti ed è stata responsabile Design per Lissoni Associati. Nel 2001, ha aperto il suo studio lavorando nei settori del product design, interni e architettura. Ha realizzato progetti retail e allestimenti per Gianvito Rossi, BMW, Flos, Missoni, Moroso, Officine Panerai, H&M, Santoni, Pitti Uomo Firenze e ha vinto diversi premi internazionali tra cui: la "Medalla de Oro al Mérito en las Bellas Artes" del Governo Spagnolo, l'Ordine di Isabella la Cattolica, consegnato da Sua Maestà il Re di Spagna Juan Carlos I, "Designer del decennio" e "Designer dell'anno".

Patricia Urquiola, Spanish architect and director and adopted Italian, is one of the pioneers of the Mutina team. She designed numerous collections since 2008, including the Déchirer series, Bas-Relief, Azulej and Tierras.

Patricia Urquiola was born in Oviedo, Spain, but has lived and worked in Milan for over 20 years. After her graduation in 1989, she worked for Achille Castiglioni, collaborated with Vico Magistretti and was Head of Design at Lissoni Associati. She opened her own studio in 2001, working in product design, interior design and architecture. She realised retail and fitting projects for Gianvito Rossi, BMW, Flos, Missoni, Moroso, Officine Panerai, H&M, Santoni and Pitti Uomo Firenze and won numerous international prizes including: Medalla de Oro al Mérito en las Bellas Artes and the Order of Isabella the Catholic, awarded to her by King Juan Carlos I of Spain, 'Designer of the Decade' and 'Designer of the Year'.

**mutina.it**

Follow us on

